



Endangered turtles



Today, there is more and more pollution in the sea a long years.



Pollution have serious impacts
on the life of the turtles
and the food they eat.



A photograph of a beach heavily littered with plastic waste. In the foreground and middle ground, there is a large pile of discarded plastic bottles, some clear, some blue, and some with colorful caps. Interspersed among the plastic are numerous long, thin pieces of light-colored driftwood. The beach is dark sand, and the background shows the ocean with white foam from waves crashing against dark, rounded rocks. The overall scene depicts significant environmental pollution.

Firstly, there are many causes which carry the disappearance of the turtles.

Secondly, the boats throw toxic rubbish in the sea such as the oil, the metals etc...



The image is a monochromatic blue-tinted photograph of an underwater scene. In the foreground and midground, several clear plastic shopping bags are seen floating or drifting. Interspersed among the bags are numerous jellyfish of various sizes, some appearing as soft, glowing shapes against the dark blue background. The overall composition suggests a theme of marine pollution and the persistence of waste in the ocean.

Finally, waste such as the glass bottles, the plastic bags and the fishing nets put more than 400 years to decompose in the sea..

The consequences of this pollution cause damages on the life of the turtles.



Photo courtesy of Ron Prendergast, Melbourne Zoo

Many assume that pollutants will be diluted and dispersed to safe levels because the ocean is so large but in reality that disturbs the balance of the oceans.



The turtles can eat a tar ball
and they die poisoned.



They can also to choke
with plastic bags.

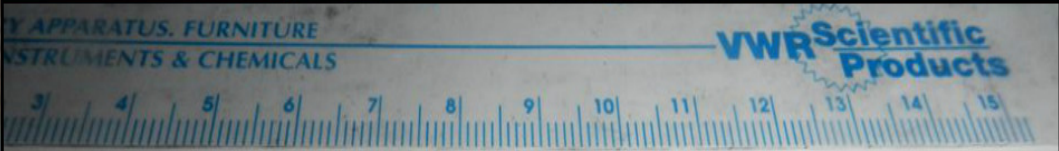


If eggs are contaminated by the oil they will have not much luck to be born, and if they survive they can have malformations.



It's very dangerous for the turtles!

For example: A day, rescuers treated a turtle with a straw in the nose, it's very horrible.



The image features a central globe of the Earth, rendered in shades of blue and white, set against a solid blue background. Surrounding the globe are ten black silhouettes of hands, each reaching out from the edges of the frame towards the center. The hands are positioned at various angles, creating a sense of collective effort and support. Overlaid on the globe is the text "For help our planet and the turtles, we can find many solutions." in a white, sans-serif font.

For help our planet and the turtles,
we can find many solutions.



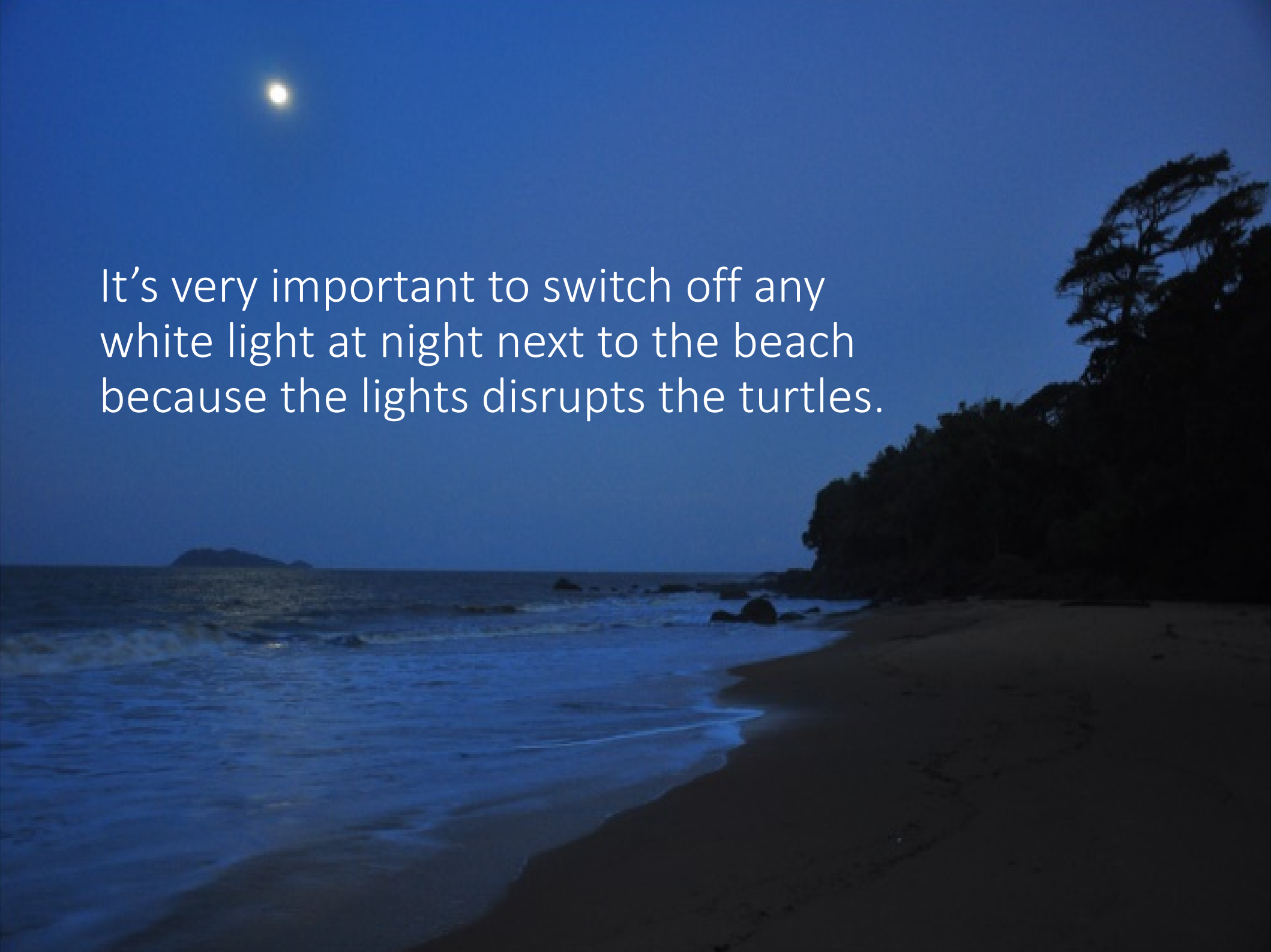
Can use less plastic bags
because we can't recycle them!

Don't throw your waste in the sea.
Try to keep clean beaches.



Don't use artificial fertilizers, use rather biological fertilizers, which will not pollute groundwaters.



A night photograph of a beach. The sky is a deep, dark blue, and a bright, full moon is visible in the upper left quadrant. The ocean is dark, with white foam from waves crashing onto the shore. The beach is a light tan color, and the right side of the image shows the dark silhouette of trees and a cliffside. The text is overlaid on the left side of the image.

It's very important to switch off any white light at night next to the beach because the lights disrupts the turtles.

Don't dig to see eggs and don't reach the turtles babies.



Therefore, we need to save the turtles because they have a role in the ecosystem. They don't deserve to suffer. Open your eyes and look at what we make them. React and protect ones for help the Earth.

